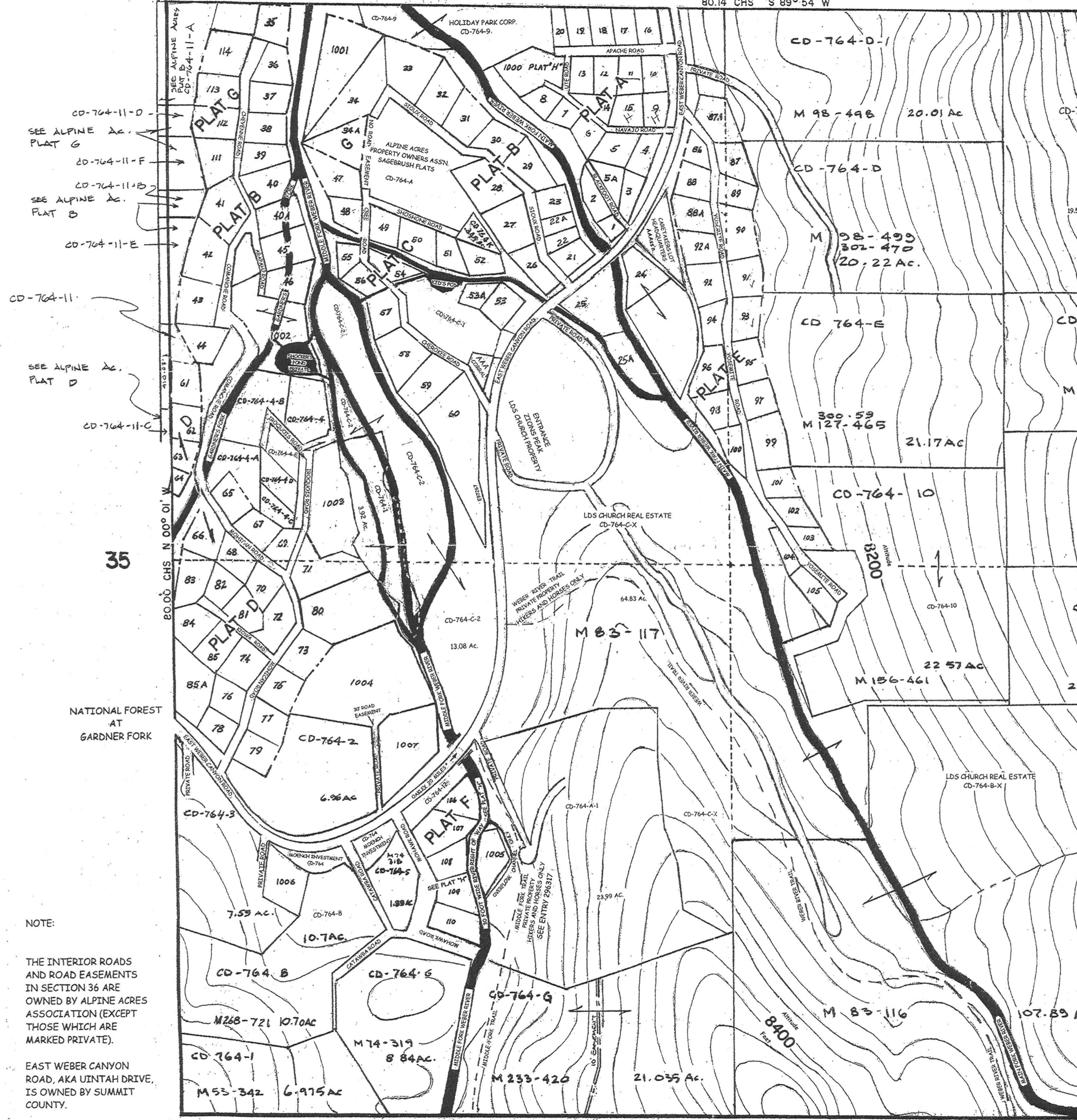


SECTION 36  
T 1 N - R 8 E

SALT LAKE BASE & MERIDIAN 640.00 AC  
SCALE 1" = 400'

ENTRANCE TO SECTION 36  
ALPINE ACRES 25 ALPINE ACRES  
80.14 CHS S 89° 54' W



CD-764-11-D  
SEE ALPINE AC.  
PLAT G

CD-764-11-F  
SEE ALPINE AC.  
PLAT B

CD-764-11-E  
SEE ALPINE AC.  
PLAT D

CD-764-11-C  
SEE ALPINE AC.  
PLAT D

NATIONAL FOREST  
AT  
GARDNER FORK

NOTE:

THE INTERIOR ROADS  
AND ROAD EASEMENTS  
IN SECTION 36 ARE  
OWNED BY ALPINE ACRES  
ASSOCIATION (EXCEPT  
THOSE WHICH ARE  
MARKED PRIVATE).

EAST WEBER CANYON  
ROAD, AKA UINTAH DRIVE,  
IS OWNED BY SUMMIT  
COUNTY.

SCALE : ONE INCH = 400 FEET

ALPINE ACRES

SUMMIT COUNTY,

Approved	REVISIONS - DATE AND INITIAL	(In Pencil)
Utah State Tax Comm		

Date By  
Engineering Associates Inc.